

Curve - 1  
 Radius = 50.00'  
 Arc Length = 158.31' (158.08')  
 Delta Angle = 181°24'24"  
 Chord = N45°17'52"W - 99.99'

Rutha Baker Survey

Block 3  
 Overton Ridge, Phase II  
 Cabinet A, Slide 7022 & 7023  
 (Document #D201270602)  
 P.R.T.C.T.

Estes Park Court  
 50' R.O.W.

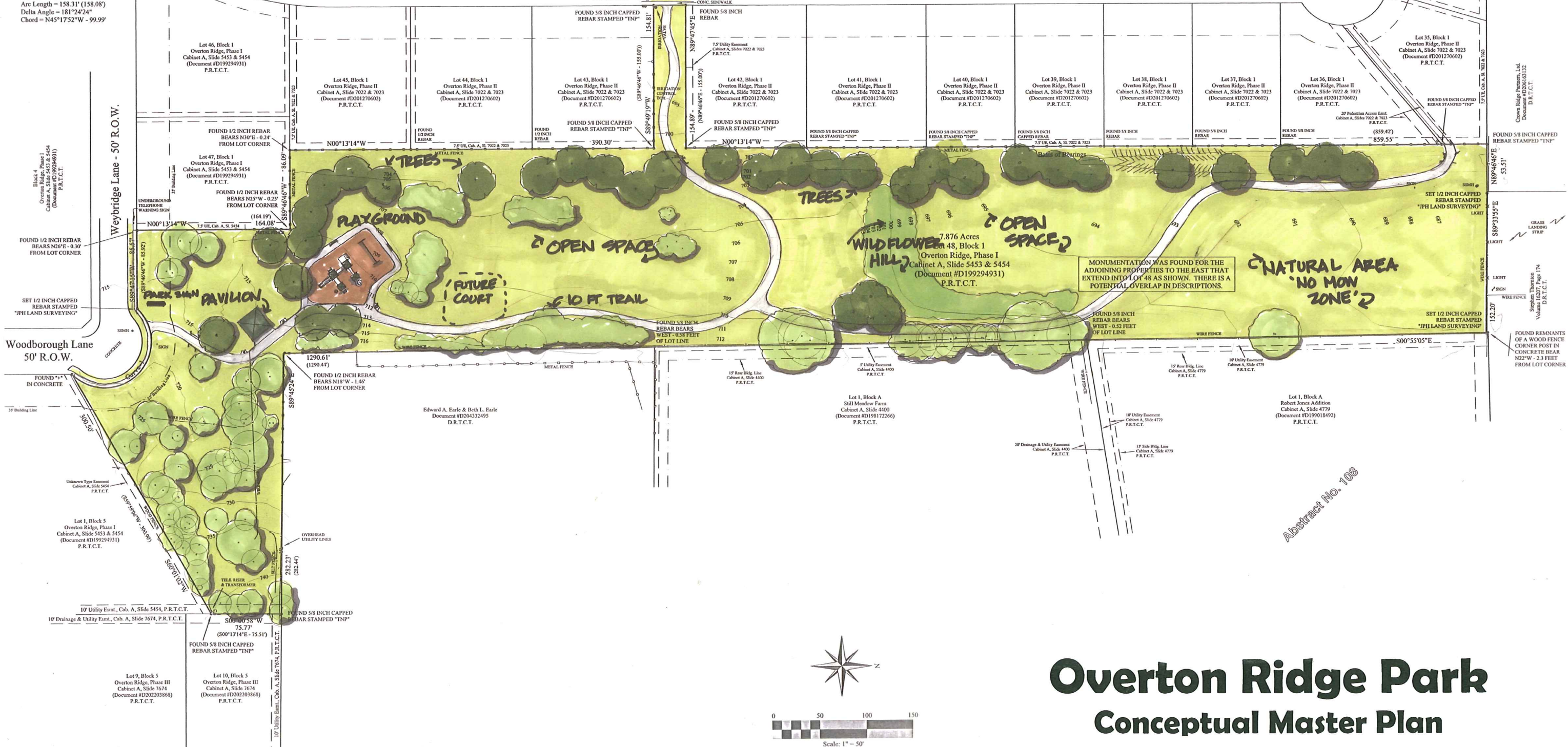
Block 3  
 Overton Ridge, Phase II  
 Cabinet A, Slide 7022 & 7023  
 (Document #D201270602)  
 P.R.T.C.T.

Northern Trace  
 50' R.O.W.

Huxley Street - 50' R.O.W.

Weybridge Lane - 50' R.O.W.

Woodborough Lane  
 50' R.O.W.



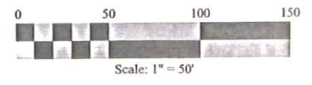
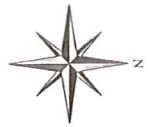
Edward A. Earle & Beth L. Earle  
 Document #D204332495  
 D.R.T.C.T.

Lot 1, Block A  
 Still Meadow Farm  
 Cabinet A, Slide 4400  
 (Document #D198172266)  
 P.R.T.C.T.

Lot 1, Block A  
 Robert James Admitt  
 Cabinet A, Slide 4779  
 (Document #D199018492)  
 P.R.T.C.T.

Lot 1, Block 5  
 Overton Ridge, Phase I  
 Cabinet A, Slide 5453 & 5454  
 (Document #D199294931)  
 P.R.T.C.T.

Lot 10, Block 5  
 Overton Ridge, Phase III  
 Cabinet A, Slide 7674  
 (Document #D202203868)  
 P.R.T.C.T.



# Overton Ridge Park

## Conceptual Master Plan

Abstract No. 108